

SC9 Series Motors

Available in five stack heights 13mm – 38mm

Lubricated for life

Sintered or ball-race bearings

4.76mm or 6mm diameter precision ground steel shaft – stainless steel and custom diameters available to special order

Voltage range 24v to 415v AC – Insulation to class B as standard, Class F available

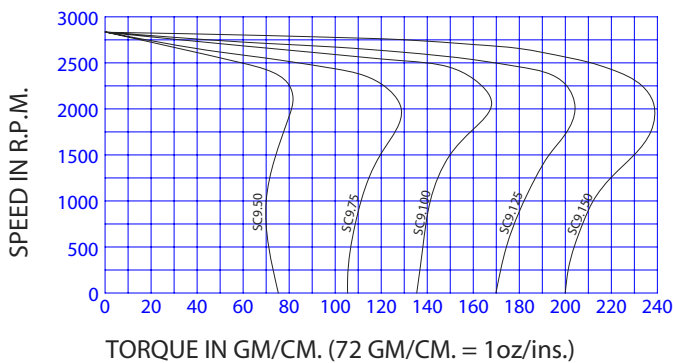
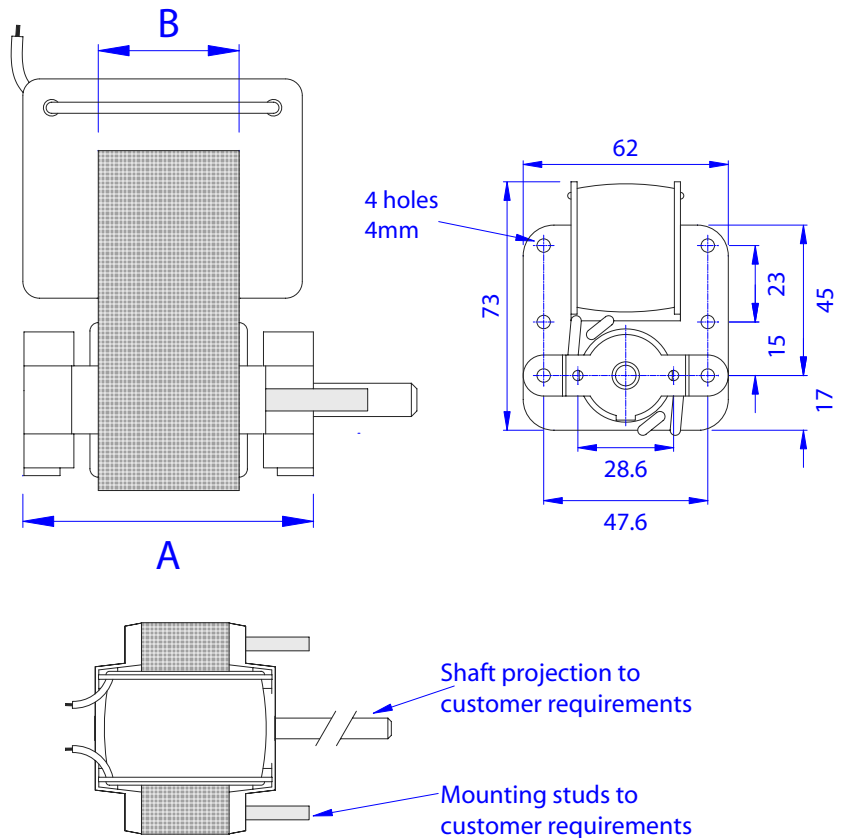
Re-setting or non re-setting thermal protection

6.3mm male tab or flying lead terminations

At the heart of the Mellor Electrics AC range is the SC9 sing



SC9 Series



Torque/Speed Characteristics - Continuous rating

DIM "B"	DIM "A"	TYPE	RATING	STARTING TORQUE GM/CMS	TORQUE	INPUT WATTS	WT. Kg.
					AT 2000 RPM		
13	38	SC9 50	CONT.	74	83	15	0.45
			INT.	90	140	30	
19	44	SC9 75	CONT.	106	125	19	0.624
			INT.	140	245	38	
25	50	SC9 100	CONT.	136	168	24	0.794
			INT.	260	340	48	
32	57	SC9 125	CONT.	170	208	30	0.964
			INT.	323	400	60	
38	63	SC9 150	CONT.	205	240	35	1.14
			INT.	390	475	70	

RSDC/RSW450 Series Motors

Carbon brushes

Hardened steel shaft

Lubricated for life sintered bearings

Life 1000 to 3000 hrs. (depending on use)

Terminations solder tabs

Can be fitted with internal suppression to meet EMC directives

RSDC

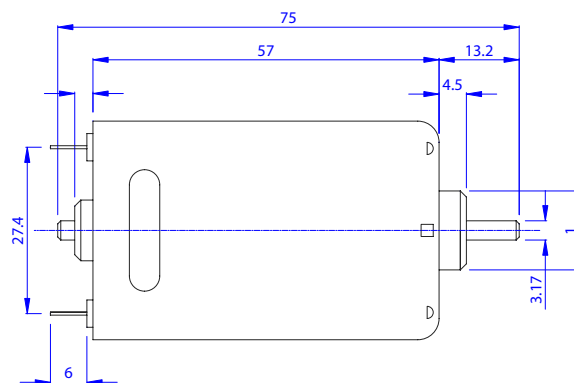
The RS Series are permanent magnet field motors for operation on 12 or 24 volts DC. These are used in conjunction with Mellor Electrics gear reducers, requiring a low cost, efficient and small DC motor for continuous operation.

RSW 450

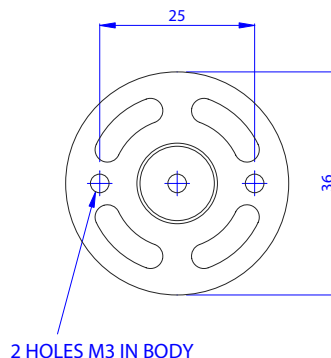
Designed as a cost effective replacement for bulky AC vending whipper motors, the RSW series is available with a wide range of stainless steel shafts. Speeds of 10,000, 12,500 and 14,000rpm are standard, as are connector PCB's or flying leads and an adaptor that allows direct connection to currently available whipper chambers.



RSDC Series



RSW 450 Series



Cat No.	Nominal Voltage	No Load		Stall Torque Ncm
		Speed	Amps	
RS-550	12	7000	0.300	19.00
RS-555	24	3500	0.150	10.00
RS-560	24	4200	0.200	12.00
RS-360	24	5600	0.150	2.30
RS-380	24	6500	0.150	3.50