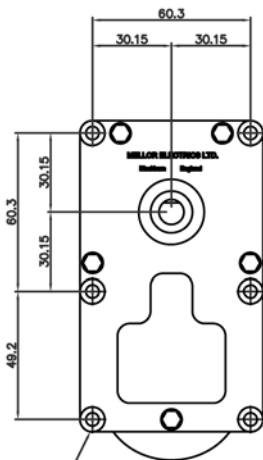


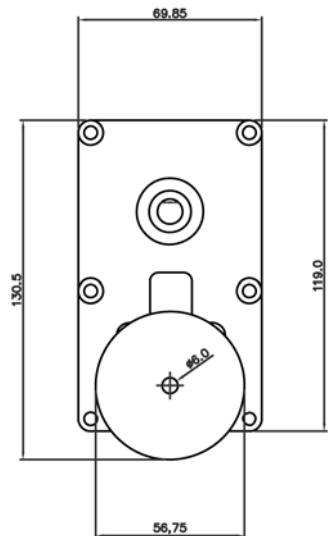
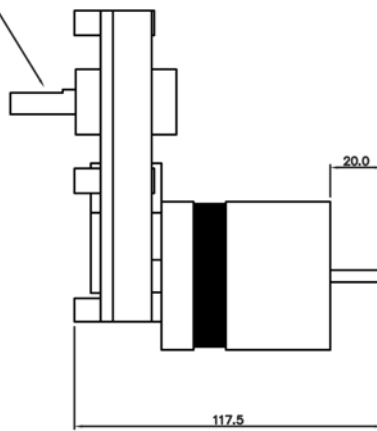
FBBD T3 Series Brushless DC Unit

- **12 - 36v DC**
- **Output Torque: Up to 35Nm depending on speed**
- **Speed Range: 0.8 - 50rpm**

The motor can be speed controlled with the EM-106 drive board to give input speeds ranging from 250 - 2500rpm. Brushless DC technology gives extended life and quiet operation compared to traditional brushed DC motors. High quality engineering ensures quiet running and a long running life.

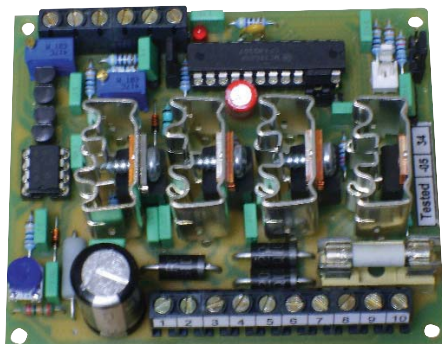


Shaft Ø and length to suit customers requirements



6 mounting holes – thread to suit customers requirements

Applicable to all FB models



Driveboard

Mellor
ELECTRICS LIMITED

Sett End Road Shadsworth Industrial Park
Blackburn Lancashire BB1 2NW United Kingdom

T: +44 (0)1254 53854 F: +44 (0)1254 678625

sales@mellorelectrics.co.uk