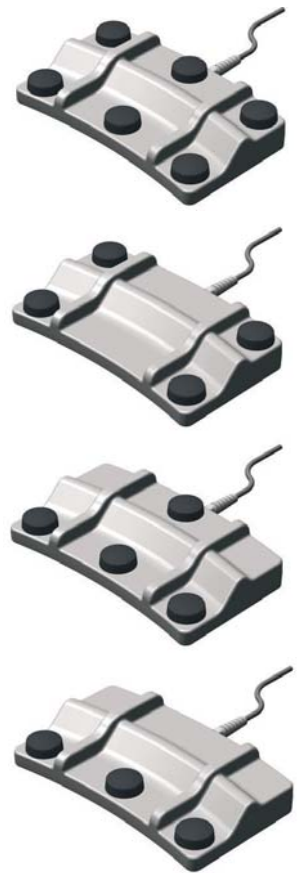


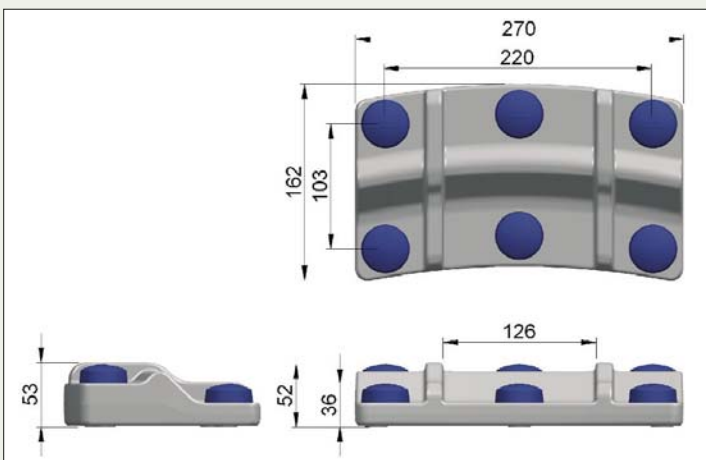


### POSSIBLE OPTIONS



### Benefits

- ❖ Multi-pedal footswitch, 1-6 pedal options.
- ❖ Compact for discrete placement beneath equipment, or for storage.
- ❖ Robust but aesthetic design.
- ❖ Switches approved to UL60601-1, IEC 60601-1.
- ❖ Enclosure rating IPX7 (IPX8 upon request).
- ❖ Single pole normally open contacts rated 50mA 12Vdc or 30mA 24Vdc.
- ❖ Soft touch buttons with a light operating force.
- ❖ Available with plugs to suit most major applications and straight or coiled cable.
- ❖ Choice of switch colours, logos and labels available.



### SWITCH COLOURS AND DESIGNS

